

FastMig™ Pulse 350/450

Delivery options

Modular hardware and software

What materials do you need to weld? The FastMig Pulse system offers two flexible and convenient welding software options: Work Pack and Project Pack.

Work Pack™

Meet all your basic welding needs in standard MIG/MAG, 1-MIG, and pulsed synergic processes. The base materials menu includes selections for ferrous, aluminium, and stainless steel welding curves for a range of wire diameters. Work Pack is easily upgraded with any of our Wise or Match products, should your next job so require. Discover great value!

Project Pack™

Select and pay for exactly what you need. Project Pack suits customers with specific project requirements, such as for welding one special material type only. With Project Pack you can select your own welding software profile from the Wise & Match product list. Should your needs change, you can easily upgrade your machine as you go. Get what you need, when you need it!



FastMig™ Pulse 350/450 – Technical specifications

	FastMig Pulse 350	FastMig Pulse 450
Mains voltage 3~50/60 Hz	400 V -15 %...+20 %	400 V -15 %...+20 %
Rated power	60 % ED	22.1 kVA
	80 % ED	16.0 kVA
	100 % ED	15.3 kVA
Connection cable / fuse delayed	4G6 (5m) / 25 A	4G6 (5m) / 35 A
Load capacity 40 °C	60 % ED	450 A
	80 % ED	350 A
	100 % ED	330 A
Welding current and voltage range	MMA 10...350 A	10...450 A
	MIG 8...50 V	8...50 V
Max. welding voltage MMA	49 V	53 V
Open circuit voltage MMA	50 V	50 V
Open circuit voltage MIG/MAG/Pulse	80 V	80V
Open circuit power	100 W	100 W
Efficiency	88 %	88 %
Power factor	0.85	0.9
Storage temperature range	-40...+60 °C	-40...+60 °C
Operating temperature range	-20...+40 °C	-20...+40 °C
Protection class	IP 23 S	IP 23 S
External dimensions (L x W x H)	590 x 230 x 430 mm	590 x 230 x 430 mm
Weight	36 kg	36 kg
Voltage supply for auxiliary devices	DC 50 V	DC 50 V
X14, X15	fuse 6.3 A, delayed	fuse 6.3 A, delayed
Voltage supply for cooling unit	DC 24V, 50 VA	DC 24V, 50 VA

FastMig™ Pulse 350/450 – Ordering information

Power sources		
FastMig Pulse 350 power source		6150400
FastMig Pulse 450 power source		6150500
Wire feeders		
MXF63 wire feeder, 200 mm	Work Pack profile	6152300EL
MXF65 wire feeder, 300 mm	Work Pack profile	6152100EL
MXF67 wire feeder, 300 mm	Work Pack profile	6152200EL
MXF63 wire feeder, 200 mm	Project Pack profile	6152300
MXF65 wire feeder, 300 mm	Project Pack profile	6152100
MXF67 wire feeder, 300 mm	Project Pack profile	6152200
Gun holder GH 30		6256030
Control panels		
Arc Wizard P65 setup panel	Included with power source	SP6155300

FastMig Pulse™ 350/450 – Ordering information

PF63 wire feeder panel	6155200
PF65 wire feeder panel	6155100
Coolers	
FastCool 10 cooling unit	606810001
SuperSnakes	
The Kemppi SuperSnake GT02S range includes 10, 15, 20, and 25 m models, gas- and water-cooled. See SuperSnake leaflet for details	
Sub feeder synchronisation unit FastMig MXF Sync	W004030
Interconnection cable sets	
Interconnection cable, 1.8 m	6260401
Interconnection cable, 5 m	6260405
Interconnection cable, 10 m	6260326
Interconnection cable, 15 m	6260325
Interconnection cable, 20 m	6260327
Interconnection cable, 30 m	6260330
Water cooled interconnection cable, 1.8 m	6260410
Water cooled interconnection cable, 5 m	6260407
Water cooled interconnection cable, 10 m	6260334
Water cooled interconnection cable, 15 m	6260335
Water cooled interconnection cable, 20 m	6260337
Water cooled interconnection cable, 30 m	6260340
Other lengths available	
Return current cable 5 m, 70 mm ²	6184711
Remotes	
R30 DataRemote, 5m	6185420
R30 DataRemote, 10m	618542001
Transport units	
P 501 wire feed transport unit	6185269
PM 500 power source transport unit	6185291
Welding software options	
MMA welding process	9991016
WiseRoot welding function	6265011
WiseThin welding function	9991013
WiseFusion welding function	9991014
WisePenetration welding function	9991000
MatchLog	9991017
DataGun software installation device	6265023

For more information ...

For on-site demonstration, evaluation, and commercial offers, including hardware and software products, please contact your local Kemppi representative.

www.kemppi.com



FastMig™ Pulse 350/450 | Mission control



AD232EN
0939

FastMig™ Pulse 350/450

Mission control



+ In brief

- Suitability for basic, synergic, pulsed, and double-pulsed MIG/MAG welding
- Quality weld performance
- A wide range of solution options
- Language choice selection
- Lightweight three-core control cable
- Administrator PIN code lock

+ Applications

- Shipyard and offshore applications
- Metal fabrication workshops
- The chemical and process industry
- Automotive manufacture
- Production welding

It's your welding mission

FastMig Pulse puts you in control. We don't just mean in welding terms, although FastMig Pulse is particularly impressive here. FastMig Pulse sets new standards for customer choice. The software architecture allows standard or tailored packages to suit your specific welding environment, so the commercial benefits are yours. Whatever your welding mission, FastMig Pulse will deliver the technical and commercial solution that's right for you.

Specification choice

Build the machine you need. Air- or water-cooled packages combine well with innovative distance wire feeding and remote control solutions. Kemppe's Wise & Match software products offer additional choice and solutions that match welding business in the real world, so you can be sure to cover your welding requirements now and far into the future.

Refine and control

Welding applications vary, so the equipment must adapt. FastMig Pulse features our Arc Wizard interface, providing a clear and logical LCD menu display. The Arc Wizard menu allows the operator to refine, adapt, and manage the arc process and system functions. Simple and precise.



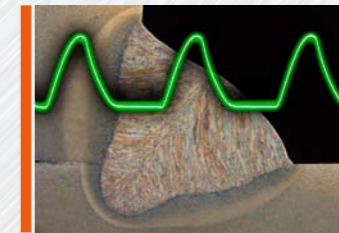
Technical and commercial solutions



PF65 wire feed panel

Using short or long connections cables? No problem - control the welding arc at any distance with the PF65.

- Power and arc length control
- Channel memory and lock
- Remote control option
- Safety isolation button
- Inductance
- Gas test
- Wire inch
- 2T/4T
- Hot start
- Crater fill
- MMA & MatchLog as options



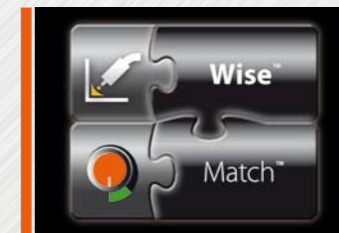
FastMig Pulse - powerful and accurate

Powerful digital processing refines and controls the welding arc, so you can rely on FastMig Pulse for consistent weld quality. ARM and FPGA processing takes welding performance to a new level, and specialist users are served by a wide variety of welding parameter controls.



R30 DataRemote

When remote arc control is necessary, R30 DataRemote provides an exact solution. Combining real-time power control, reliable welding data display, and channel remote selection, R30 DataRemote packs all of this into the size of a mobile phone.



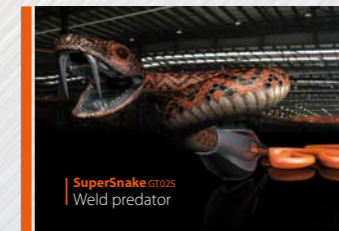
Wise and Match

The Wise and Match options provide specialised welding software solutions. The product menus include special weld processes for root and thin plate welding, automatic power regulation, and arc length recognition, plus additional base material curves and panel function options. With Wise and Match, you can turn something special into something unique.



DataGun - automatic field programming device

To ensure a simple and flexible approach to field software updates, Kemppe offer DataGun. This compact hand-held device is loaded with your Wise and/or Match software licence code order and delivered to your door. Put DataGun to your machine and its automatically configured and up-dated. Magically simple!



SuperSnake GT025 - Freedom to weld

If distance and access are your problem, check out the SuperSnake GT025. This ultimate weld predator delivers a solid combination for distance wire feeding and restricted-access welding. The SuperSnake connects simply to the FastMig Pulse wire feed unit, taking quality welding to locations other welding machines just can't reach.



For the toughest environments

FastMig Pulse wire feed units MXF63, MXF65 and MXF67 incorporate the same control systems and the latest DuraTorque 4x4 wire drive mechanisms. However MXF63 and MXF67 includes a tough and impact-resistant, dual-skin plastic housing, making it light in weight and very robust.



Arc Wizard P65 panel

Select, manage, and refine your welding process with the Arc Wizard P65 interface. Menu selections include:

- Language choice
- Welding functions
- User channel parameters
- System configuration
- Administrator code option and even a time and date display.

Extend and Reach

